

# **Internet Explorer 5.5+**

## **Privacy Advisory**

Prepared by Shortfuse

America's Least Wanted Online  
P.O. Box 4020  
South Bend, IN 46634-4020

America's Least Wanted Online is issuing a public advisory to customers of Microsoft Internet Explorer version 5.5 and higher of a possible breach of user privacy when using public terminals or terminals positioned in areas where others are likely to come into contact with the system. The issue results from enabling of the "Auto Complete" feature found in Internet Explorer v. 5.5 and higher. When enabled, the system will retain and store passwords, e-mail addresses and other items put into forms on the internet.

The Auto Complete feature is designed to make it easier for users to access frequently typed information, but on a public terminal, this could be an undesirable feature. Depending on what options within the feature are enabled, sensitive information such as e-mail addresses, social security numbers, credit card information and passwords may be stored and made accessible to anyone who happens to click in the same field as the person who originally typed the information.

Auto Complete remembers snippets of text typed by a user, and then presents those option(s) to the user next time he or she enters that field. On a public terminal, this information may be disclosed to a party other than the person who originally input the information.

The information remains even after rebooting or restarting the computer, clearing of the temporary Internet files cache, cookies cache and restarting Internet Explorer.

**Example of Auto Complete Feature in Microsoft Internet Explorer 6.0:**



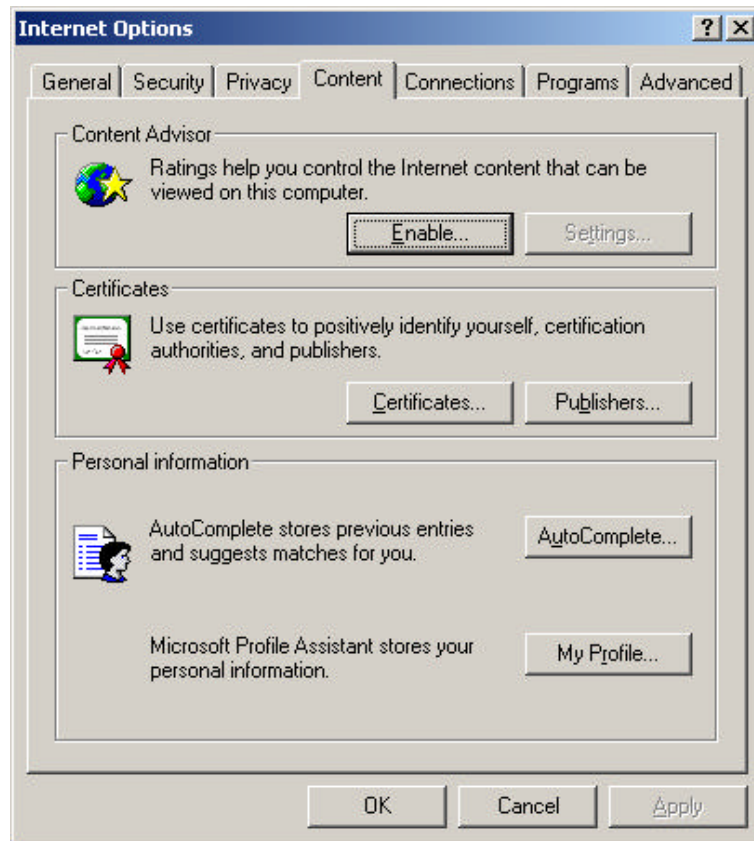
America's Least Wanted is recommending that system administrators in schools, libraries, universities and other institutions disable the Auto Complete features on all computers that may possibly be accessed by multiple users to protect user privacy and to prevent the unintentional divulging of passwords, user names, credit card information and other confidential information.

Information is included on the following page to assist users in correcting this issue, and the procedures are the same regardless of the version of Internet Explorer.

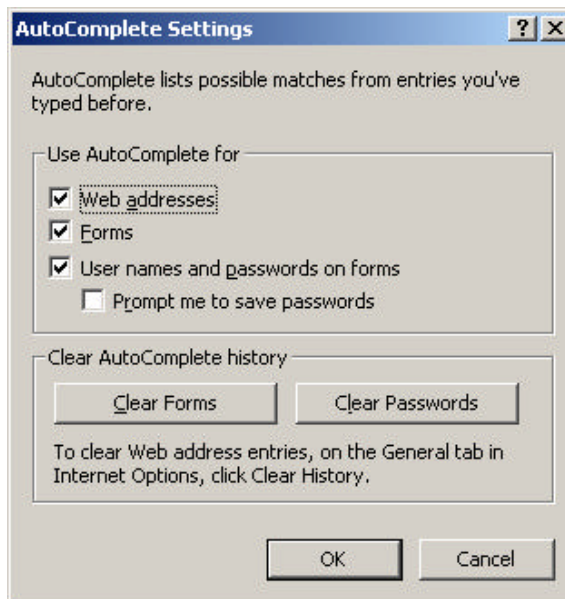
## Disabling Auto Complete in Microsoft Internet Explorer:

To disable the Auto Complete features in Microsoft Internet Explorer, follow these simple directions below.

1. Close all programs and restart the computer.
2. Open Microsoft Internet Explorer.
3. Go to **Tools** and choose **Internet Options**.
4. Click the **Content** tab near the top of the window that opens.
5. Under the personal information section, select the **AutoComplete** button as shown below.



6. A window similar to the one below should appear on your screen.



7. Uncheck the **Forms** and **User Names and Passwords on Forms** boxes, if checked.
8. Click **Clear Forms** and confirm your decision to clear any stored entries.
9. Click **Clear Passwords** and confirm your decision to clear any stored entries here as well.
10. Click **OK** and restart Microsoft Internet Explorer.

Upon completion of step ten, Microsoft Internet Explorer will cease to retain any information that is typed by users into web-based forms.